

What are T Levels?

T Levels are new courses coming in from September 2020, which will follow GCSEs and will be equivalent to 3 A Levels. These 2 – year courses have been developed in collaboration with employers and businesses so that the content meets the needs of industry and prepares you for work. The ‘**T**’ in **T levels** stands for **Technical**; the idea behind these qualifications is that they will introduce a new system of technical education to provide a high quality technical option for learners aged 16-19. They will be a mixture of current technical qualifications similar to BTEC and NVQ , including the vocational and practical elements with the theory, study style and exam element of A-levels.

How do they work?

A T Level is split into three main sections which are as follows:

1. **The Technical Qualification (TQ)** – this is the main, classroom-based part of the qualification. This is where students will be able to learn about their chosen sectors through a curriculum designed by employers. This technical qualification will have two parts:
 - 1.1. **Core content** – this is the core knowledge and skills relevant to all occupations covered by the T Level.
 - 1.2. **Occupational specialism** – this is the knowledge and hands-on or practical skills needed to do a particular occupation or job.
2. **The Industry Placement** – this placement will be for at least 45 days and will give students practical insights into their chosen sector and an opportunity to embed the knowledge and skills that they have gained in the classroom.
3. **English, maths and digital** provision is built into the classroom-based element of the T Level. The programme will also include **employability, enrichment and pastoral** activities, and other industry requirements for work in that occupation, for example Health and Safety qualifications.

How T Levels will work with either post-16 choices

T Levels will become one of the main choices for students after GCSEs alongside:

- Apprenticeships: for students who wish to learn a specific occupation ‘on the job’
- A-levels: for students who wish to continue academic education

Who should study for a T Level?

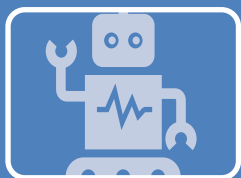
T Levels are ideal for you if you are moving on from GCSE studies and you think you would enjoy a practical approach to studying that also includes a 3 month industry placement with an employer.

What sectors are available from September 2020?



Construction Sector

Design, Surveying & Planning T Level



Digital Sector

Digital Production, Design & Development T Level



Education and Childcare Sector

Education T Level

Where will you be able to study T Levels locally?

Provider Name	Construction T Level	Digital T Level	Education and Childcare T Level
Chichester College Group	*	*	*
Fareham College		*	*
Farnborough College of Technology		*	*
HSDC (Havant & South Downs College)	*	*	*
Peter Symonds College			*

What are the entry requirements?

They are **Level 3** qualifications so the entry requirements will be similar to current **Level 3** qualifications such as BTEC and A-level. Generally students will need to have achieved the standard entry requirement of at least five GCSEs at grades 9-4, or equivalent, including mathematics and English. **It is important to check with each establishment when considering this option.**

PLEASE NOTE: For students who don't meet the entry requirements for Level 3, all local providers offering T Levels will also be offering **Level 2** one-year transition programmes which will be targeted at young people who are not ready to start a T Level at age 16, but who can realistically be expected to complete a T level by age 19.

How will T Levels be graded?

The assessment for the qualification be a mixture of exams, coursework, workplace observations, an employer project and an end-point assessment. Students who pass all the elements of their T Level will gain a nationally recognised certificate showing an overall grade of pass, merit or distinction. It will also detail what students have achieved on the course.

The T Level certificate will include:

- An overall pass grade for the T Level, shown as pass, merit or distinction.
- A separate grade for the occupational specialism, shown as pass, merit or distinction.
- A separate grade for the core component, using A* to E
- Grades for maths and English qualifications
- Details of the industry placement

In order to pass the qualification, students must have fully completed the industry placement element of the course and gained the necessary level of work experience which will be validated by the employer.

What other T levels will be introduced in the future?

In 2021 T Levels will become available in a much wider range of subjects than the three pilot areas, and will include:

T Levels available for delivery from September 2021 – current Year 10 students
T Levels available for delivery from September 2022 onwards (roll out to be confirmed)

Accountancy	Agriculture, Land Management and Production	Animal Care and Management	Building Services Engineering	Catering
Craft and Design	Cultural Heritage and Visitor Attractions	Design, development and control	Digital business services	Digital support and services
Financial	Hair, beauty and aesthetics	Health	Healthcare science	Human Resources
Legal	Maintenance, installation and repair	Management and administration	Manufacturing and process	Media, broadcast and production
Onsite construction				Science

Who should study an unpaid T Level over a paid Apprenticeship?

T levels and Apprenticeships are different. T levels will give you the opportunity to continue your studies and get a broad idea of what it would be like to work in a certain sector, with the opportunity to choose your specialism later. Apprenticeships are paid, work-based training for those students who have a good idea of what occupation they wish to pursue.

Can you go to university after studying for a T Level?

Yes, you can. T Levels will prepare you to progress into a skilled job, but you can also choose to take further technical training, such as a Higher Apprenticeship or degree, if you don't want to move straight into a job. The Department of Education has recently produced a policy update (**August 2019**) which covers confirmation of the UCAS Tariff for A-levels. Points will be allocated to overall T level grades, not to separate elements of the T level to recognise the value of the qualification as a whole. The table below shows the UCAS tariff allocation for T Levels and how it compares to the allocation for A levels.

UCAS tariff points	T Level overall grade	A level
168	Distinction*	A*A*A*
144	Distinction	AAA
120	Merit	BBB
96	Pass (C or above on the core)	CCC
72	Pass (D or E on the core)	DDD

For more information on the above, please visit the following link:

https://assets.publishing.service.gov.uk/government/uploads/system/uploads/attachment_data/file/825272/T_Level_action_plan_policy_update.pdf

Where can you find out more?

For details of the content of each T level, talk to the providers who will be delivering the qualification. Ask questions at open evenings about assessment, progression, work experience to enable you to make an informed choice as to whether the qualification will suit you. Compare the assessment to other qualifications on offer or apprenticeships.

The following websites will also be useful to help with your research:

<https://www.gov.uk/government/publications/introduction-of-t-levels/introduction-of-t-levels>

<https://www.instituteforapprenticeships.org/t-levels/what-are-t-levels/>

There is also a useful video with the T Level branding: <https://youtu.be/doW5-SUpUN0>

Through this document you may be informed of other websites which are not under the control of EBP South. We have no control over the nature, content and availability of those sites. The inclusion of any links does not necessarily imply a recommendation or endorse the views expressed within them.

This document has been collated by Basingstoke Consortium and EBP South from information available in the public domain - September 2019. Should you require this document in a larger font or format, please contact your career practitioner or enquiries@ebpsouth.co.uk or Info@bas-consort.org.uk.